



PROJECT PREPARATION FACILITY

PPF Evaluation and Application Process

Sapphire Vital, Sustainable
Energy Junior Engineer, CCREEE



Co-Funded by the
European Union



german
cooperation
DEUTSCHE ZUSAMMENARBEIT



Implemented by
giz Deutsche Gesellschaft
für Internationale
Zusammenarbeit (GIZ) GmbH

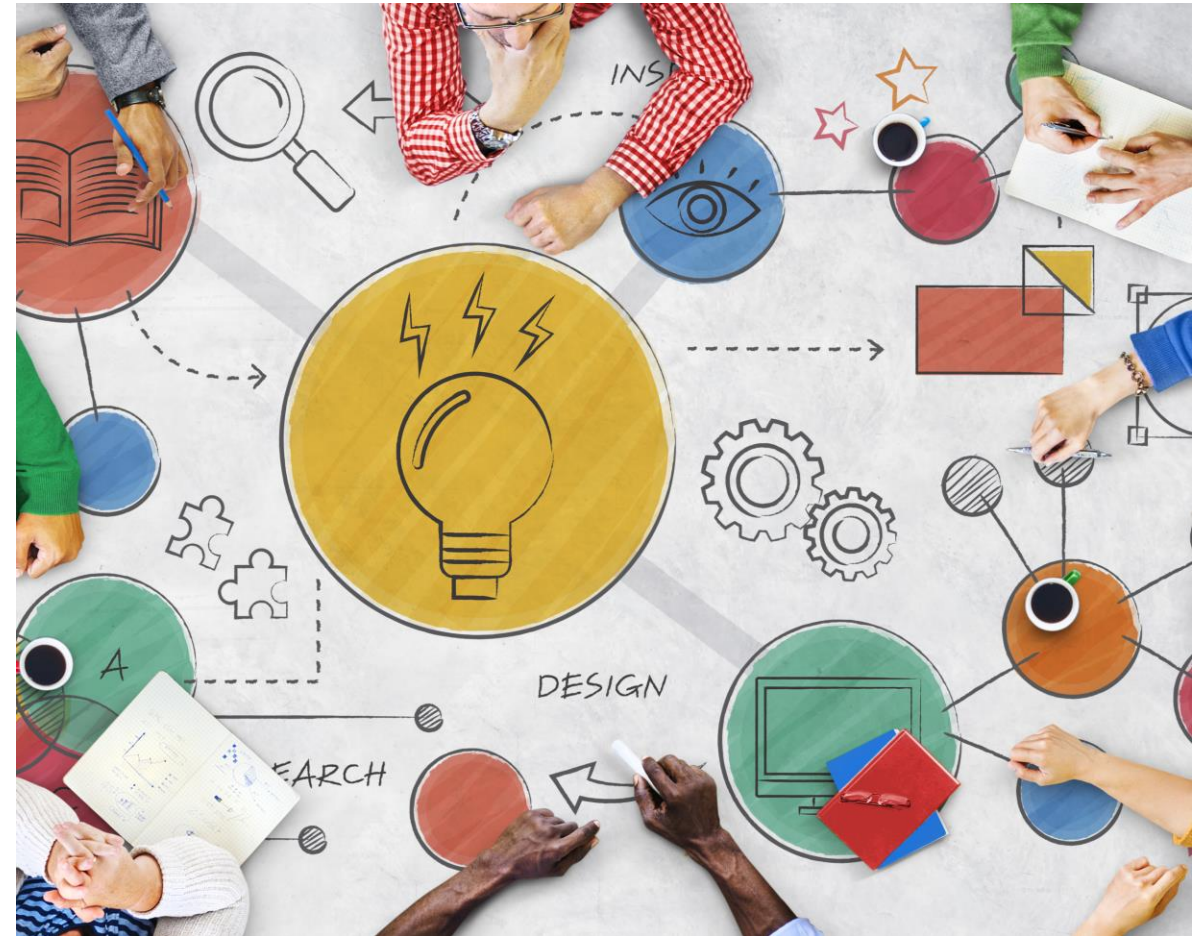


PFAN
Accelerating Investment
for Climate and Clean Energy



Presentation Overview

- PPF Services
- Project Eligibility
- Evaluation Criteria
- Application Process



What does the PPF offer?

Technical and
commercial design

Prefeasibility
assessments

Feasibility studies

Business plan/
project proposal
refinement and
development

Market
identification

Offtake
agreements

Facilitation of
permitting
processes

Stakeholder
management

Engineering,
procurement and
construction
management

Financier
introduction

Deal flow
management

Due diligence
facilitation

Is my project eligible?

Country

- CARICOM Member State

Organization

- Private sector
- Public sector
- Public-private partnership
- Mixed capital company
- NGO

Project Stage

- Pre-feasibility
- Feasibility
- Financial Close

Technology

- Renewable Energy
- Energy Efficiency

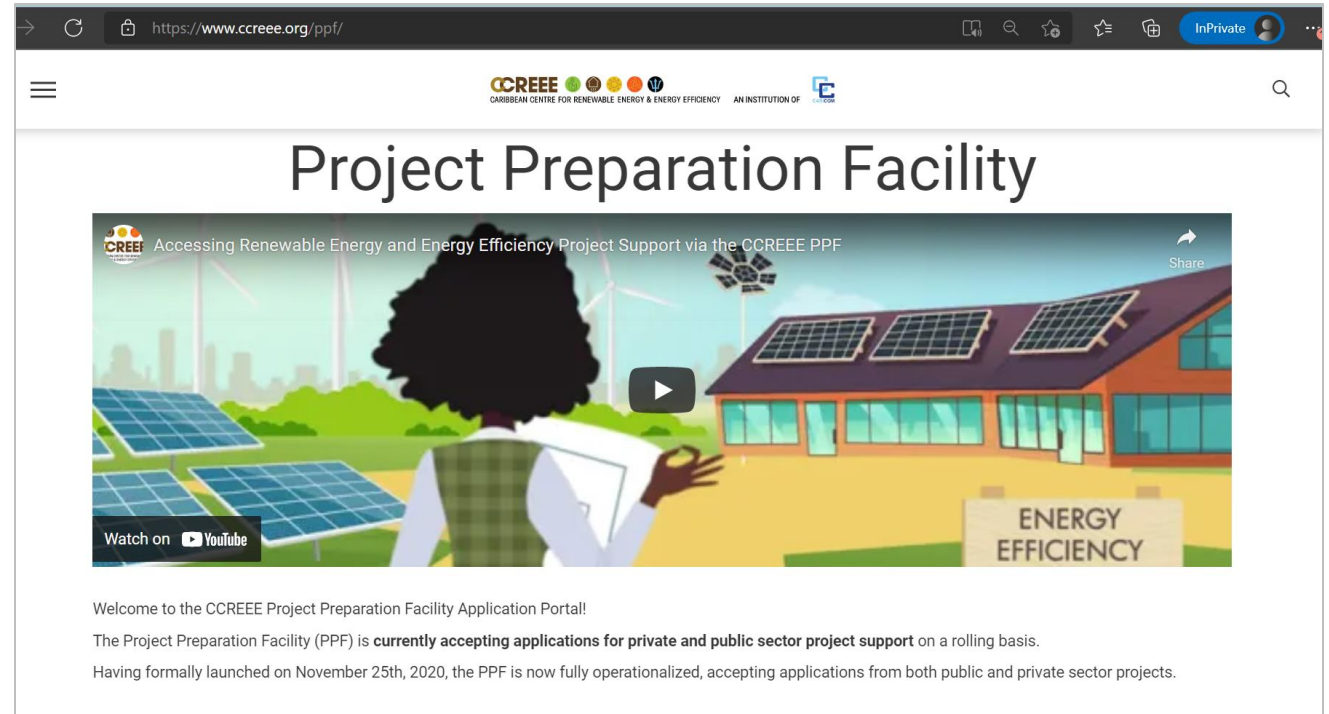
What does the PPF look for in a project?

- **Commercial viability:** Is there a real value proposition here?
- **Technical viability:** Does this work technically?
- **Management:** Do you get the impression this team can achieve their plans?
- **Financial viability:** Does this project sound like it could generate a return for investors?

- Site
- Resource
- Off taker
- Permits
- Technology
- Team
- Capital
- Construction

How can I apply for the PPF?

1. Register: <https://www.ccreee.org/ppf/>
2. Create an account
3. Navigate the application portal:
<https://climate-invest.fluxx.io>
4. Submit your application



Project Preparation Facility

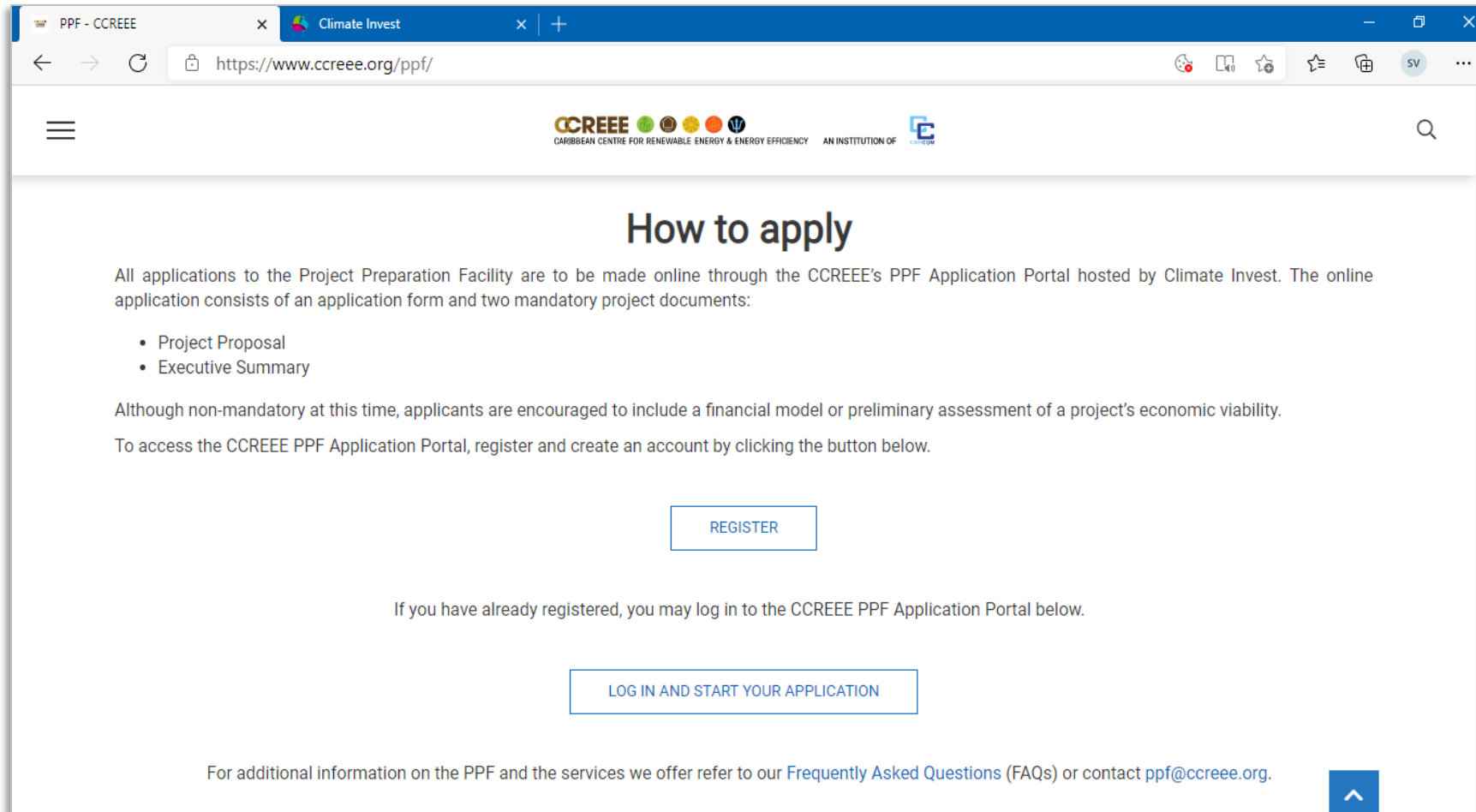
Accessing Renewable Energy and Energy Efficiency Project Support via the CCREEE PPF

Welcome to the CCREEE Project Preparation Facility Application Portal!

The Project Preparation Facility (PPF) is **currently accepting applications for private and public sector project support** on a rolling basis.

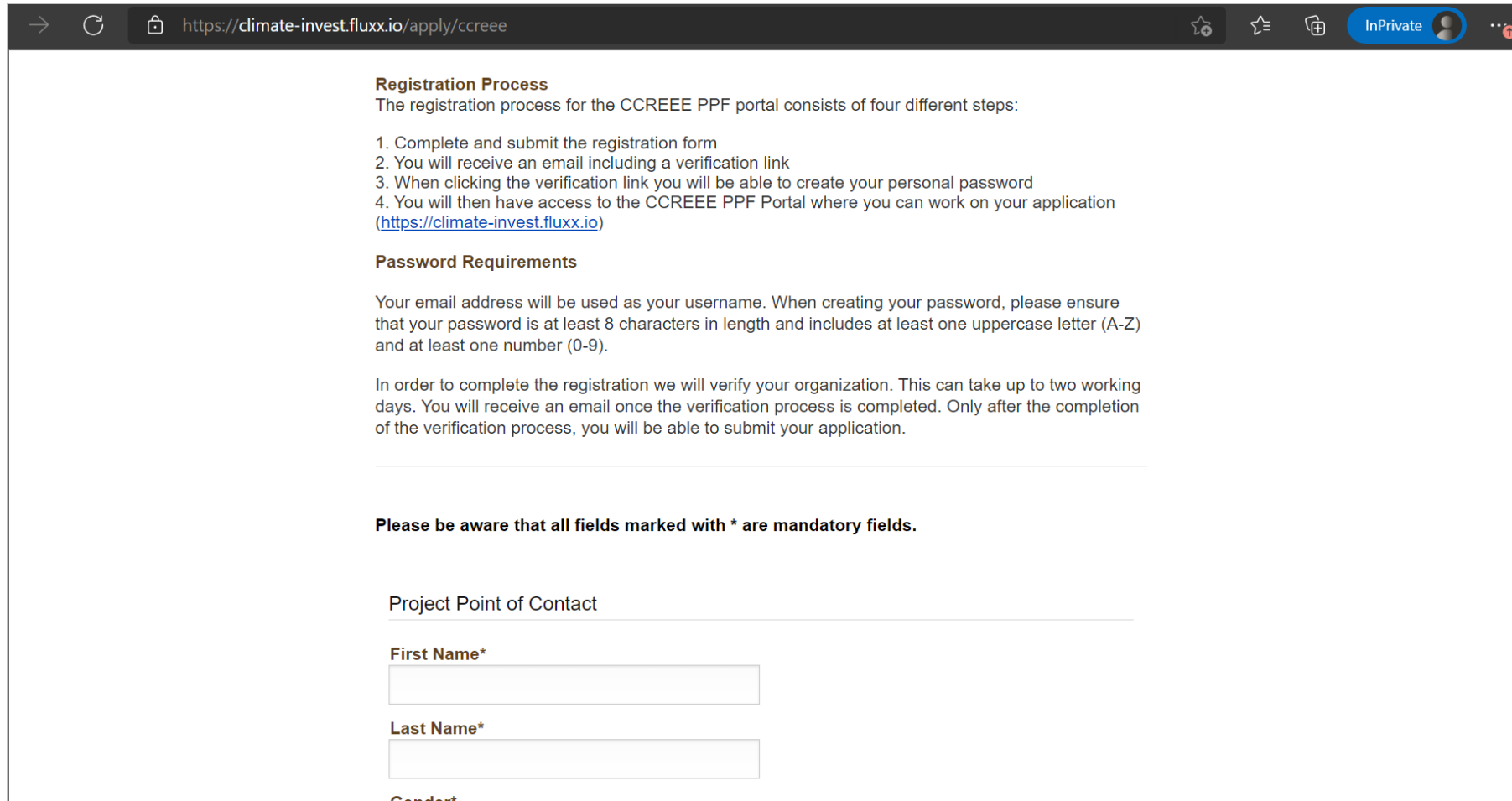
Having formally launched on November 25th, 2020, the PPF is now fully operationalized, accepting applications from both public and private sector projects.

Register to the PPF



The screenshot shows a web browser window with two tabs: 'PPF - CCREEE' and 'Climate Invest'. The address bar shows the URL 'https://www.ccreee.org/ppf/'. The page header includes the CCREEE logo and the text 'CARIBBEAN CENTRE FOR RENEWABLE ENERGY & ENERGY EFFICIENCY AN INSTITUTION OF CARICOM'. The main heading is 'How to apply'. Below this, the text reads: 'All applications to the Project Preparation Facility are to be made online through the CCREEE's PPF Application Portal hosted by Climate Invest. The online application consists of an application form and two mandatory project documents:'. A bulleted list follows: '• Project Proposal' and '• Executive Summary'. Further text states: 'Although non-mandatory at this time, applicants are encouraged to include a financial model or preliminary assessment of a project's economic viability. To access the CCREEE PPF Application Portal, register and create an account by clicking the button below.' A blue button labeled 'REGISTER' is centered on the page. Below it, the text says: 'If you have already registered, you may log in to the CCREEE PPF Application Portal below.' A second blue button labeled 'LOG IN AND START YOUR APPLICATION' is centered. At the bottom of the page, it says: 'For additional information on the PPF and the services we offer refer to our [Frequently Asked Questions \(FAQs\)](#) or contact ppf@ccreee.org.' A blue arrow button pointing up is located in the bottom right corner of the page content.

Register to the PPF



→ ↻ <https://climate-invest.fluxx.io/apply/ccreee> InPrivate

Registration Process

The registration process for the CCREEE PPF portal consists of four different steps:

1. Complete and submit the registration form
2. You will receive an email including a verification link
3. When clicking the verification link you will be able to create your personal password
4. You will then have access to the CCREEE PPF Portal where you can work on your application (<https://climate-invest.fluxx.io>)

Password Requirements

Your email address will be used as your username. When creating your password, please ensure that your password is at least 8 characters in length and includes at least one uppercase letter (A-Z) and at least one number (0-9).

In order to complete the registration we will verify your organization. This can take up to two working days. You will receive an email once the verification process is completed. Only after the completion of the verification process, you will be able to submit your application.

Please be aware that all fields marked with * are mandatory fields.

Project Point of Contact

First Name*

Last Name*

Gender*

Navigate the application portal

PPF - CCREEE | Climate Invest

climate-invest.fluxx.io

CCREEE
CARIBBEAN CENTRE FOR RENEWABLE ENERGY & ENERGY EFFICIENCY
AN INSTITUTION OF CARICOM

Welcome to the CCREEE PPF Portal!

From this portal you can submit and track an application, monitor a contracted project and submit project deliverables.

The PPF offers a range of project development services to private sector projects in sustainable energy, including project financial modelling, technical feasibility, environmental and social validation, and investor matchmaking. However, please note that the PPF itself does not provide project financing. The PPF aims to support sustainable energy projects across the project development cycle, forging a robust pipeline of investment ready projects in CARICOM Member States.

Look out for the extension of the PPF services through the addition of a public sector stream to support government agencies with sustainable energy project development.

[Start New Application](#)

Before starting your application:

- Check the **PROJECT ELIGIBILITY** and **SCORING CRITERIA** below
- The **APPLICATION** consists of an online form and 3 documents (max. vol. 20MB):

INFORMATION
Application Guidelines

PEOPLE (1)
My Profile (1)

ORGANIZATIONS
My Organization

APPLICATION DRAFTS
Application Drafts

APPLICATIONS
Sent back Applications
Submitted Applications

New Application

FLUXX

Complete the application form

- Organization Information
- Point of Contact Information
- Project Overview
 - Total Cost
 - Location
 - Service Target Market
 - Commercial Arrangements
 - Project Benefits
- Project Size
- Project Status
- Project Development Needs
 - Investment Required
 - Purpose of Investment
- Technology to be Used
- Documents to be Submitted:
 - Executive Summary
 - Project Concept/Proposal
 - Economic Model (optional)



What should I expect after I submit my application?

Possible outcomes:

- Accepted
- Rejected
- Sent back



PROJECT PREPARATION FACILITY



Thank you

For Additional Information

Visit: ccreee.org/ppf

Email: ppf@ccreee.org